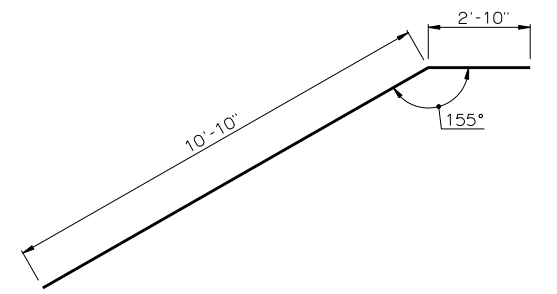
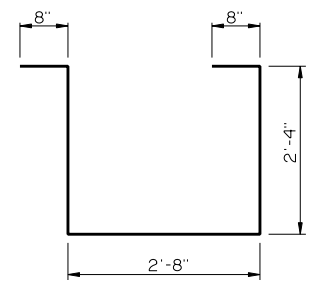


PLAN  
CONCRETE TRAFFIC RAIL (TR3) NOT SHOWN  
BRIDGE SEAT SHOWN WITHOUT SKEW

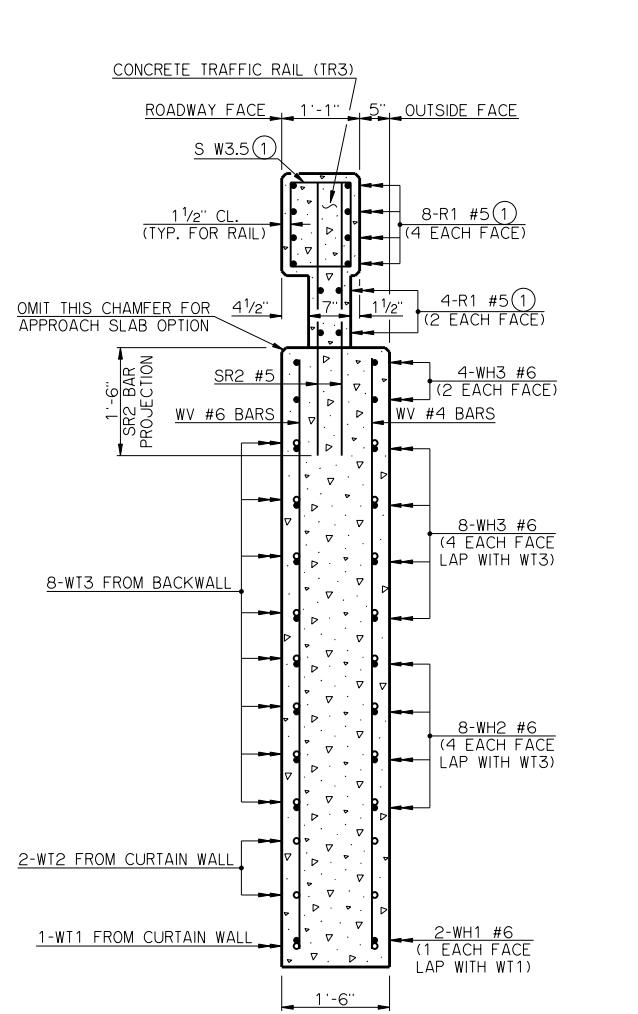


WH1 #6 X 13'-8"

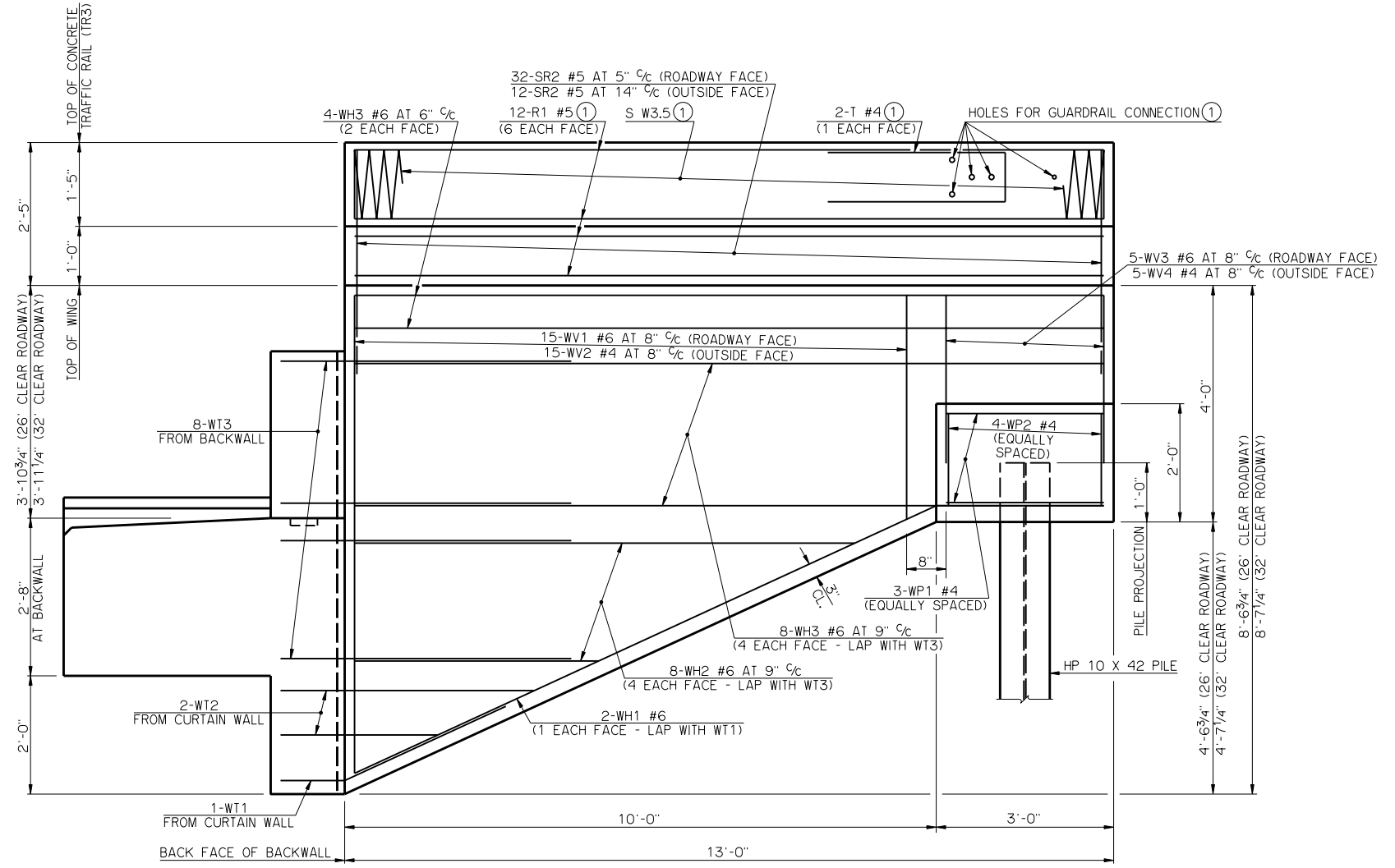


WP1 #4 X 8'-8"

DETAILS OF BENT REINFORCING STEEL



SECTION THRU WING AT BACK FACE OF BACKWALL



ELEVATION

BAR LIST - ONE WING					
MARK	NO.	SIZE	FORM	LENGTH	LENGTH VARIATION
SR2	44	#5	STR.	3'-9"	-
WH1	2	#6	BNT.	13'-8"	-
WH2	8	#6	STR.	6'-5" AVG.	4'-3" TO 8'-7"
WH3	12	#6	STR.	12'-8"	-
WV1	15	#6	STR.	5'-11" AVG.	3'-9" TO 8'-1"
WV2	15	#4	STR.	5'-11" AVG.	3'-9" TO 8'-1"
WV3	5	#6	STR.	3'-7"	-
WV4	5	#4	STR.	3'-7"	-
WP1	3	#4	BNT.	8'-8"	-
WP2	4	#4	STR.	1'-7"	-

② NO. INCLUDES TWO SETS OF 4 BARS

SUMMARY OF QUANTITIES - ONE WING		
ITEM	UNIT	TOTAL
SUBSTRUCTURE EXCAVATION COMMON	CY	15.00
CONCRETE RAIL (TR3)	LF	13.00
CLASS A CONCRETE	CY	4.50
REINFORCING STEEL	LB	1100.00
PILES, FURNISHED (HP 10 x 42)	LF	-
PILES, DRIVEN (HP 10 x 42)	LF	-

③ QUANTITY INCLUDES ALL COST OF CONCRETE TRAFFIC RAIL (TR3) INCLUDING R1, S AND T REINFORCING STEEL BARS AND CONCRETE.

APPROVED BY BRIDGE ENGINEER *Robert J. Rusch* DATE 10/16/08  
 OKLAHOMA DEPARTMENT OF TRANSPORTATION  
 COUNTY BRIDGE STANDARD (ENGLISH)  
**WING DETAILS**  
**30' THRU 50' ROLLED BEAMS**  
 26' AND 32' CLEAR ROADWAYS - CONVENTIONAL - SKEWED 30°  
 1999 STANDARD SPECIFICATIONS      CB26..32-C-SK30-WING-RB-3050      OOE      CB-928E

① SEE BRIDGE STANDARD TR3-1 FOR DETAILS NOT SHOWN