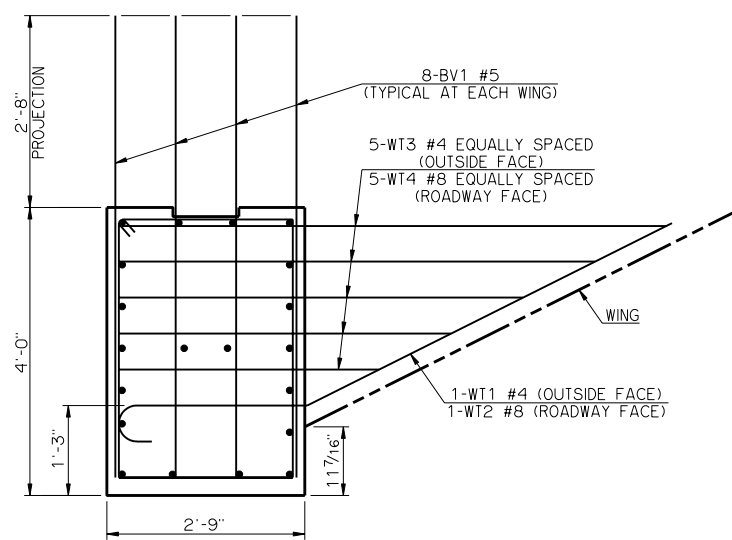
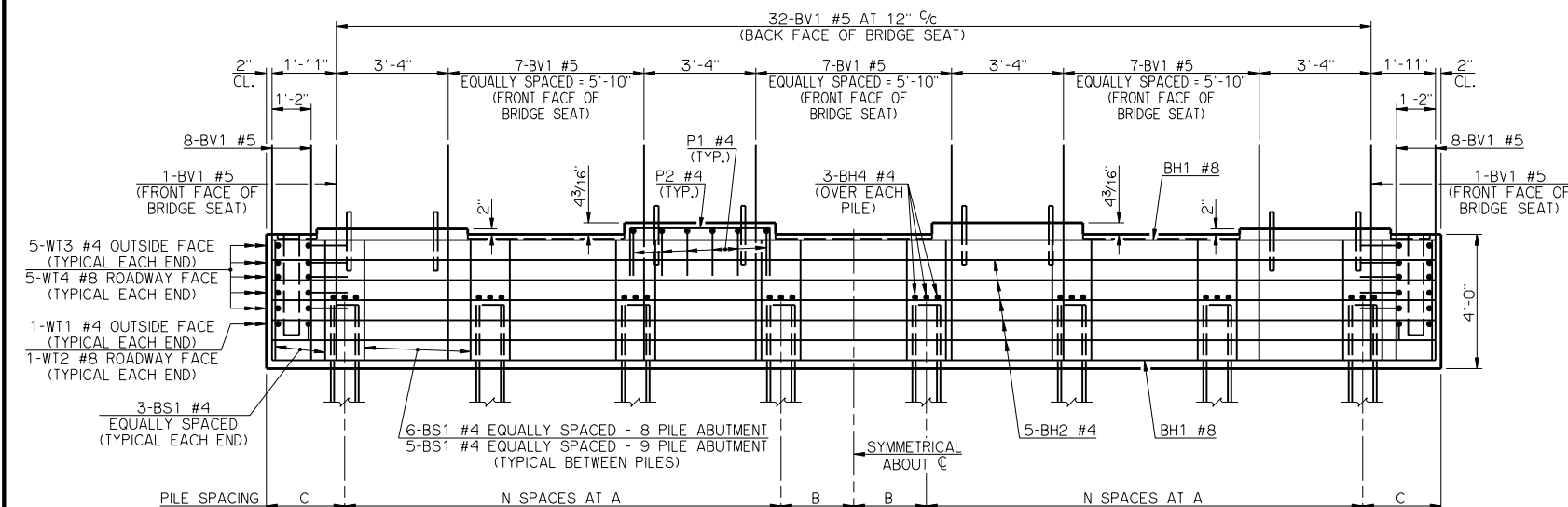


PLAN

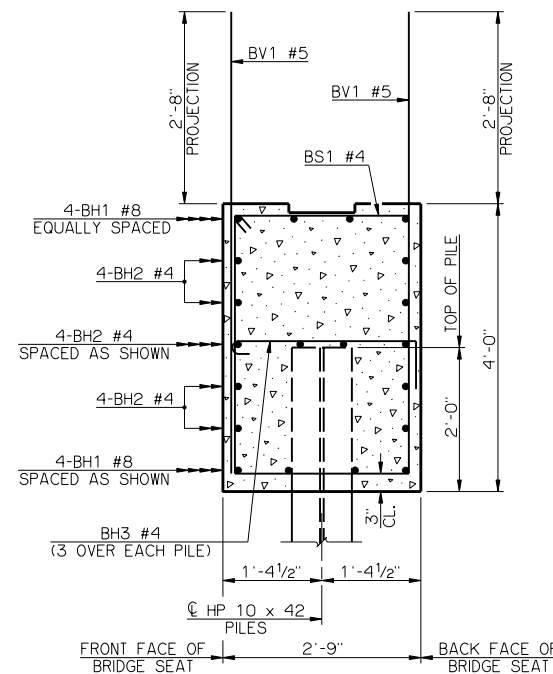


VIEW A-A

PILE SCHEDULE						
SPAN	TOTAL NUMBER OF PILES	N SPACES	A	B	C	MAXIMUM FACTORED PILE LOAD
85'	8	3	4'-4"	2'-2"	2'-4"	68.0 TON
90'	8	3	4'-4"	2'-2"	2'-4"	70.1 TON
95'	8	3	4'-4"	2'-2"	2'-4"	72.2 TON
100'	8	3	4'-4"	2'-2"	2'-4"	74.2 TON
105'	8	3	4'-4"	2'-2"	2'-4"	76.5 TON
110'	9	4	3'-9"	0'-0"	2'-6"	69.8 TON
115'	9	4	3'-9"	0'-0"	2'-6"	71.6 TON



ELEVATION



TYPICAL SECTION THRU BRIDGE SEAT

BAR LIST - ONE ABUTMENT					
MARK	NO.	SIZE	FORM	LENGTH	LENGTH VARIATION
BH1	8	#8	STR.	34'-8"	-
BH2	12	#4	STR.	34'-8"	-
BV1	71	#5	STR.	6'-5"	-
P1	24	#4	BNT.	4'-11"	-
P2	16	#4	BNT.	6'-8"	-
WT1	2	#4	BNT.	5'-2"	-
WT2	2	#8	BNT.	11'-2"	-
WT3	10	#4	STR.	5'-7" AVG.	3'-7" TO 7'-7"
WT4	10	#8	BNT.	6'-11" AVG.	4'-11" TO 8'-11"
ADDITIONAL BARS TO BE USED WITH 8 PILE ABUTMENTS					
BH3	24	#4	BNT.	3'-7"	-
BS1	48	#4	BNT.	12'-9"	-
ADDITIONAL BARS TO BE USED WITH 9 PILE ABUTMENTS					
BH3	27	#4	BNT.	3'-7"	-
BS1	46	#4	BNT.	12'-9"	-

① NO. INCLUDES TWO SETS OF 5 BARS

SUMMARY OF QUANTITIES - ONE ABUTMENT ②

ITEM	UNIT	TOTAL
SUBSTRUCTURE EXCAVATION COMMON	CY	40.00
GRANULAR BACKFILL	CY	43.00
CLASS A CONCRETE	CY	14.60
REINFORCING STEEL	LB	2,400.00
PILES, FURNISHED (HP 10 x 42)	LF	-
PILES, DRIVEN (HP 10 x 42)	LF	-
6" PERFORATED PIPE UNDERDRAIN ROUND	LF	33.00
6" NON-PERF. PIPE UNDERDRAIN RND.	LF	-

② EXCLUDES WINGS

NOTES

ABUTMENT WING CONCRETE SHALL NOT BE POURED UNTIL THE ABUTMENT DIAPHRAGMS OF THE SUPERSTRUCTURE AND THE DECK SLAB CONCRETE HAVE ATTAINED A STRENGTH OF 3,000 PSI.

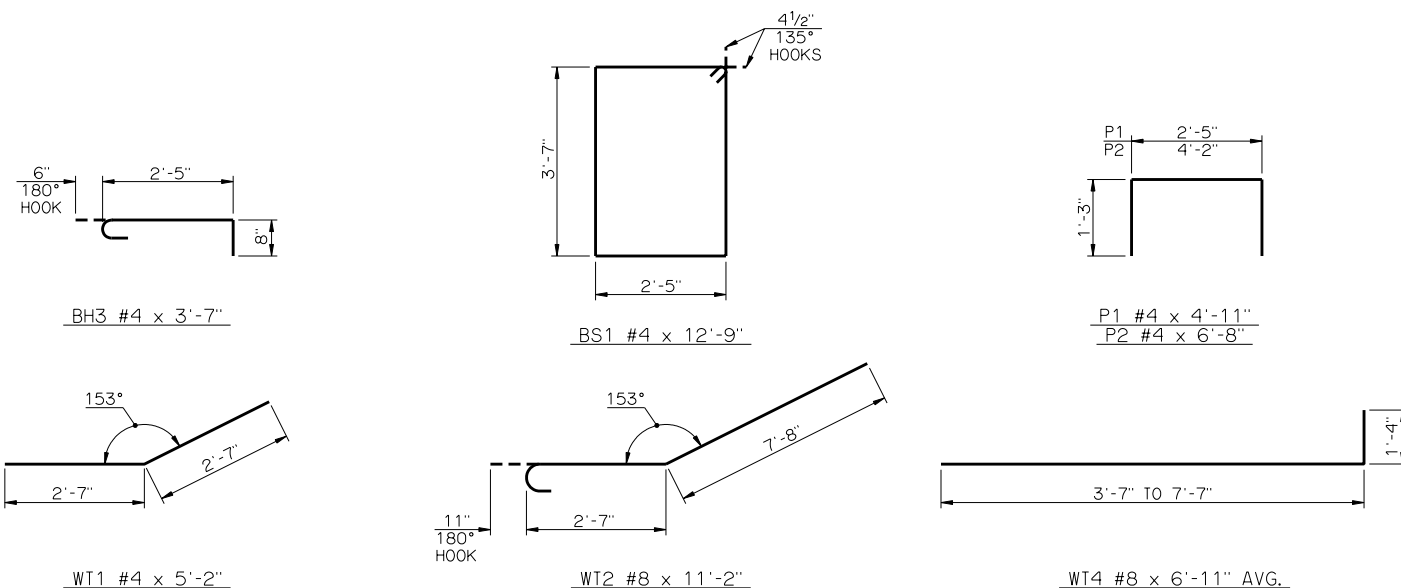
ALL WT WING REINFORCING STEEL TIED TO BRIDGE SEAT REINFORCING STEEL MUST BE IN PLACE PRIOR TO POURING THE BRIDGE SEAT CONCRETE.

APPROVED BY BRIDGE ENGINEER *Robert J. Rusch* DATE 10/16/05

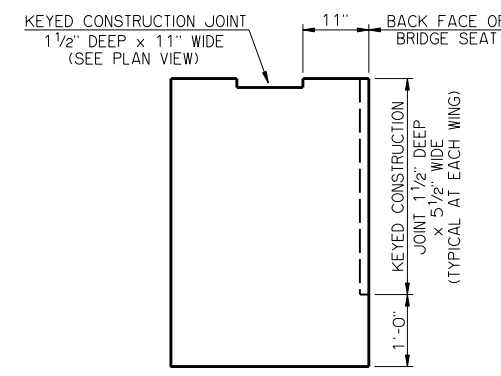
OKLAHOMA DEPARTMENT OF TRANSPORTATION
COUNTY BRIDGE STANDARD (ENGLISH)

ABUTMENT DETAILS
TYPE IV P.C. BEAMS

32' CLEAR ROADWAY - INTEGRAL - SKEWED 0°
1999 STANDARD SPECIFICATIONS CB32-I-SKO-ABUT-PC4 OOE CB-751E



DETAILS OF BENT REINFORCING STEEL



DETAIL OF CONSTRUCTION JOINTS