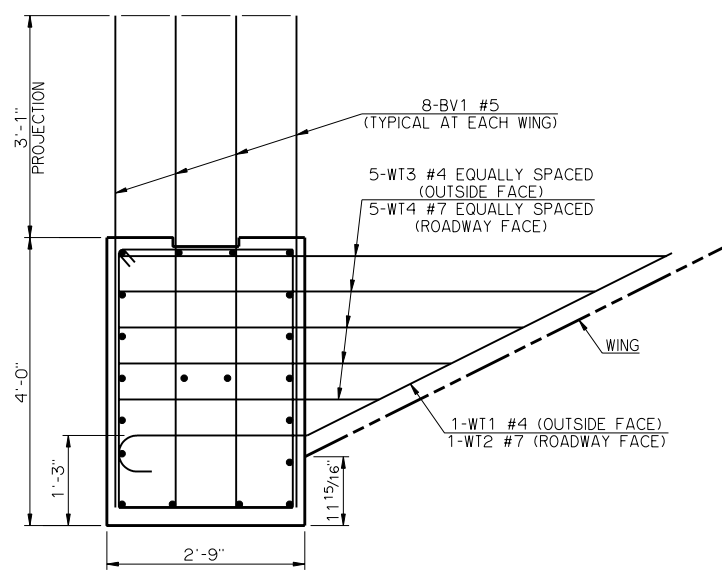


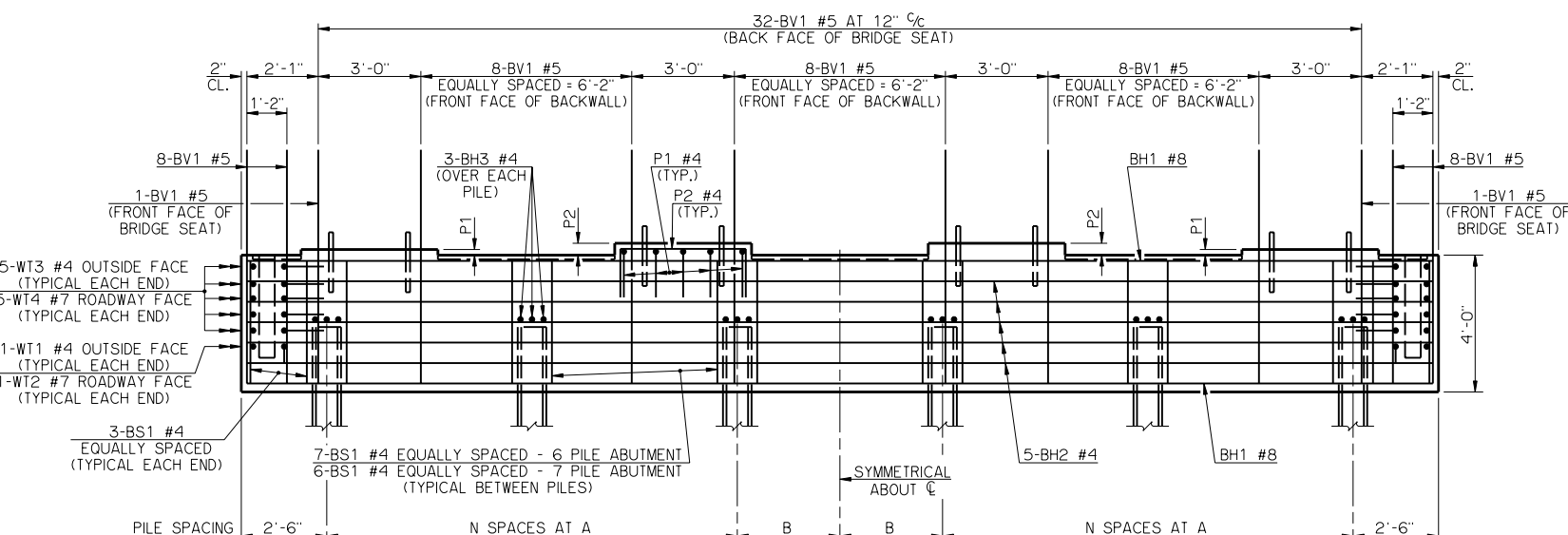
PLAN



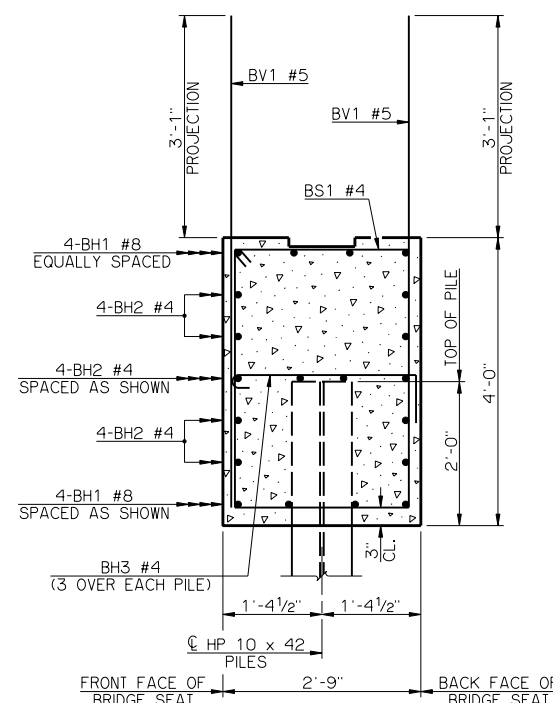
VIEW A-A

PEDESTAL DIMENSIONS		
BEAM TYPE	P1	P2
TYPE III	2"	4 <sup>3</sup> / <sub>16</sub> "
TYPE C	7"	9 <sup>3</sup> / <sub>16</sub> "

PILE SCHEDULE					
SPAN	TOTAL NUMBER OF PILES	N SPACES	A	B	MAXIMUM FACTORED PILE LOAD
60'	6	2	6'-0"	3'-0"	70.6 TON
65'	6	2	6'-0"	3'-0"	73.2 TON
70'	6	2	6'-0"	3'-0"	76.7 TON
75'	7	3	5'-0"	0'-0"	68.0 TON
80'	7	3	5'-0"	0'-0"	70.2 TON
85'	7	3	5'-0"	0'-0"	72.3 TON
90'	7	3	5'-0"	0'-0"	74.5 TON



ELEVATION



TYPICAL SECTION THRU BRIDGE SEAT

BAR LIST - ONE ABUTMENT					
MARK	NO.	SIZE	FORM	LENGTH	LENGTH VARIATION
BH1	8	#8	STR.	34'-8"	-
BH2	12	#4	STR.	34'-8"	-
BV1	74	#5	STR.	6'-10"	-
P1	20	#4	BNT.	5'-9"	-
P2	16	#4	BNT.	7'-0"	-
WT1	2	#4	BNT.	5'-2"	-
WT2	2	#7	BNT.	9'-1"	-
WT3	10	#4	STR.	5'-5" AVG.	3'-6" TO 7'-4"
WT4	10	#7	BNT.	6'-7" AVG.	4'-8" TO 8'-6"
ADDITIONAL BARS TO BE USED WITH 6 PILE ABUTMENTS					
BH3	18	#4	BNT.	3'-7"	-
BS1	41	#4	BNT.	12'-9"	-
ADDITIONAL BARS TO BE USED WITH 7 PILE ABUTMENTS					
BH3	21	#4	BNT.	3'-7"	-
BS1	42	#4	BNT.	12'-9"	-

① NO. INCLUDES TWO SETS OF 5 BARS

SUMMARY OF QUANTITIES - ONE ABUTMENT ②		
ITEM	UNIT	TOTAL
SUBSTRUCTURE EXCAVATION COMMON	CY	40.00
GRANULAR BACKFILL	CY	35.00
CLASS A CONCRETE	CY	15.20
REINFORCING STEEL	LB	2,330.00
PILES, FURNISHED (HP 10 x 42)	LF	-
PILES, DRIVEN (HP 10 x 42)	LF	-
6" PERFORATED PIPE UNDERDRAIN ROUND	LF	33.00
6" NON-PERF. PIPE UNDERDRAIN RND.	LF	-

② EXCLUDES WINGS

NOTES

ABUTMENT WING CONCRETE SHALL NOT BE POURED UNTIL THE ABUTMENT DIAPHRAGMS OF THE SUPERSTRUCTURE AND THE DECK SLAB CONCRETE HAVE ATTAINED A STRENGTH OF 3,000 PSI.

ALL WT WING REINFORCING STEEL TIED TO BRIDGE SEAT REINFORCING STEEL MUST BE IN PLACE PRIOR TO POURING THE BRIDGE SEAT CONCRETE.

APPROVED BY BRIDGE ENGINEER *Robert J. Rusch* DATE 10/16/05

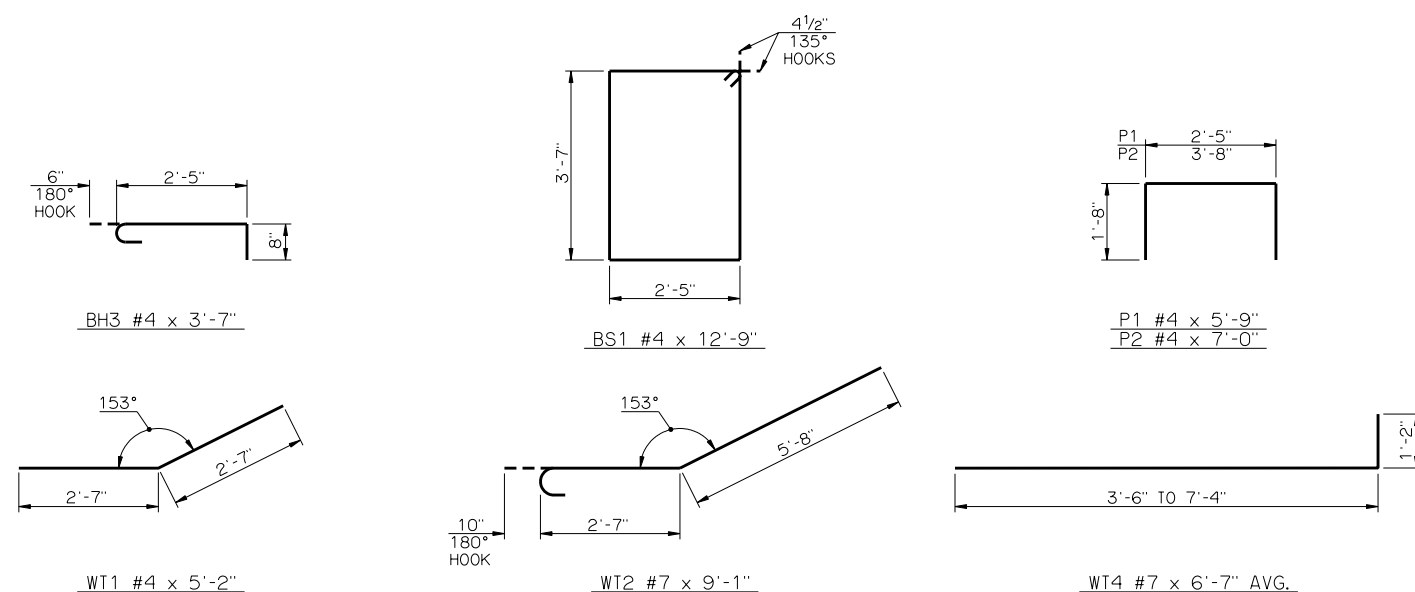
OKLAHOMA DEPARTMENT OF TRANSPORTATION  
COUNTY BRIDGE STANDARD (ENGLISH)

ABUTMENT DETAILS  
TYPE III AND TYPE C P.C. BEAMS

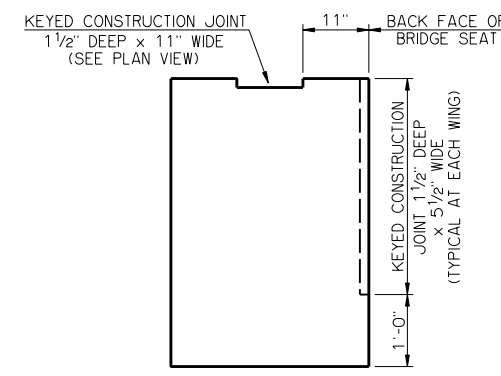
32' CLEAR ROADWAY - INTEGRAL - SKEWED 0°

1999 STANDARD SPECIFICATIONS CB32-I-SKO-ABUT-PC3 OOE

CB-750E



DETAILS OF BENT REINFORCING STEEL



DETAIL OF CONSTRUCTION JOINTS