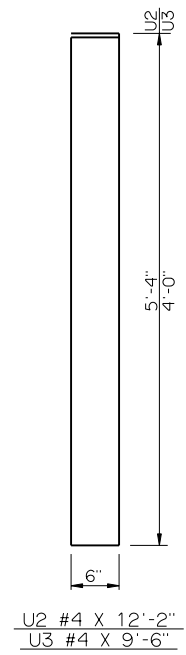
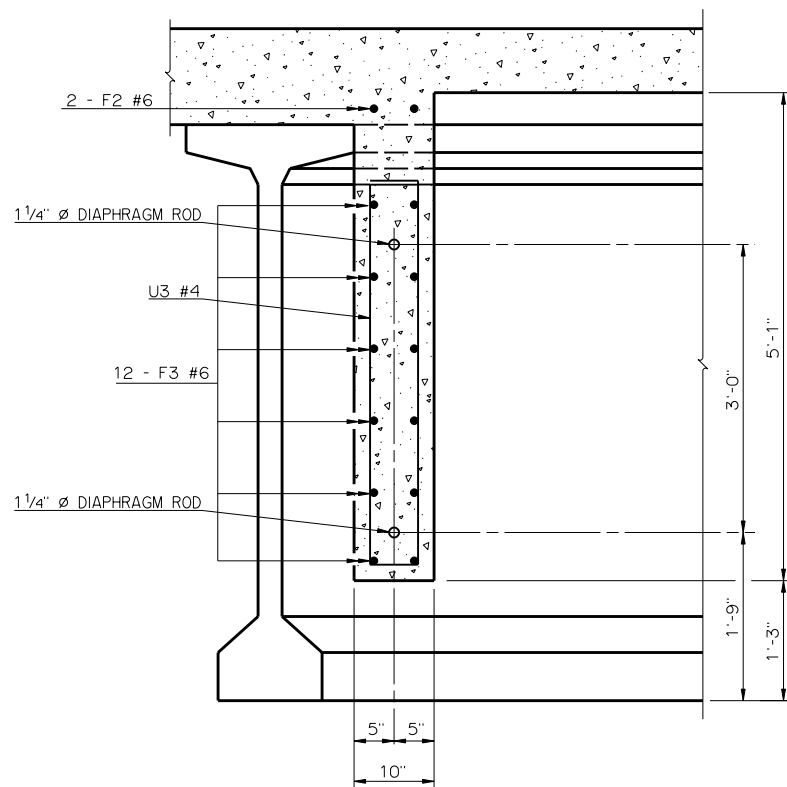


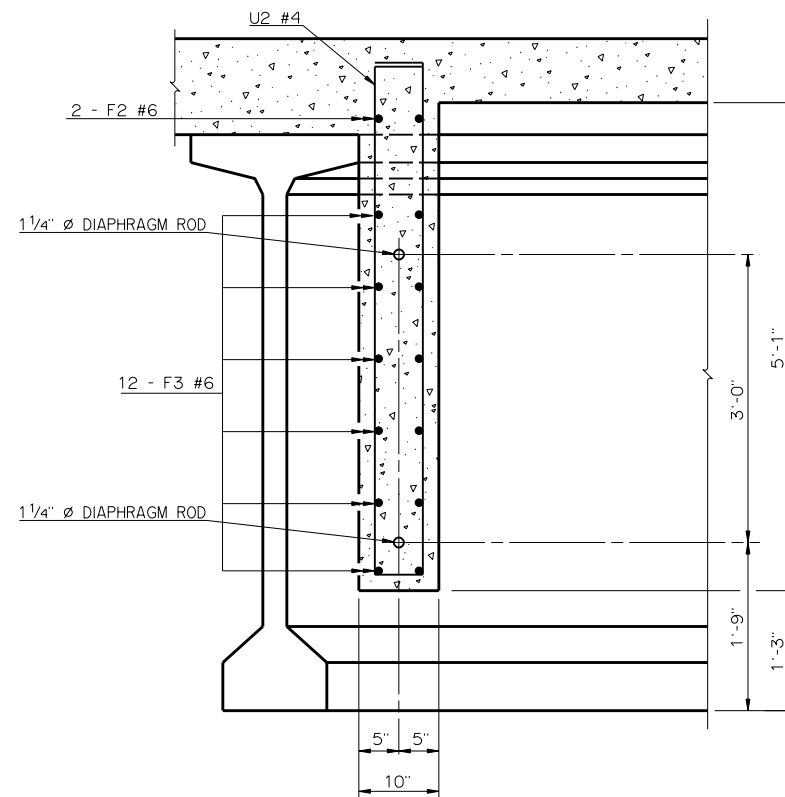
PLAN OF END DIAPHRAGM
LEFT FORWARD SKEW SHOWN, RIGHT FORWARD SKEW OPPOSITE HAND



DETAILS OF BENT REINFORCING STEEL



SECTION A-A



SECTION B-B

BAR LIST - ONE END DIAPHRAGM				
MARK	NO.	SIZE	FORM	LENGTH
U2	7	#4	BNT.	12' - 2"
U3	4	#4	BNT.	9' - 6"
F2	2	#6	STR.	6' - 3"
F3	12	#6	STR.	9' - 8"

APPROVED BY BRIDGE ENGINEER *Robert J. Rusch* DATE 10/16/05
 OKLAHOMA DEPARTMENT OF TRANSPORTATION
 COUNTY BRIDGE STANDARD (ENGLISH)
END DIAPHRAGM DETAILS
TYPE BT-72 AND TYPE J P.C. BEAMS
 32' CLEAR ROADWAY - CONVENTIONAL - SKEWED 30°
 1999 STANDARD SPECIFICATIONS CB32-C-SK30-DIA-END-PC5 OOE
 CB-618E