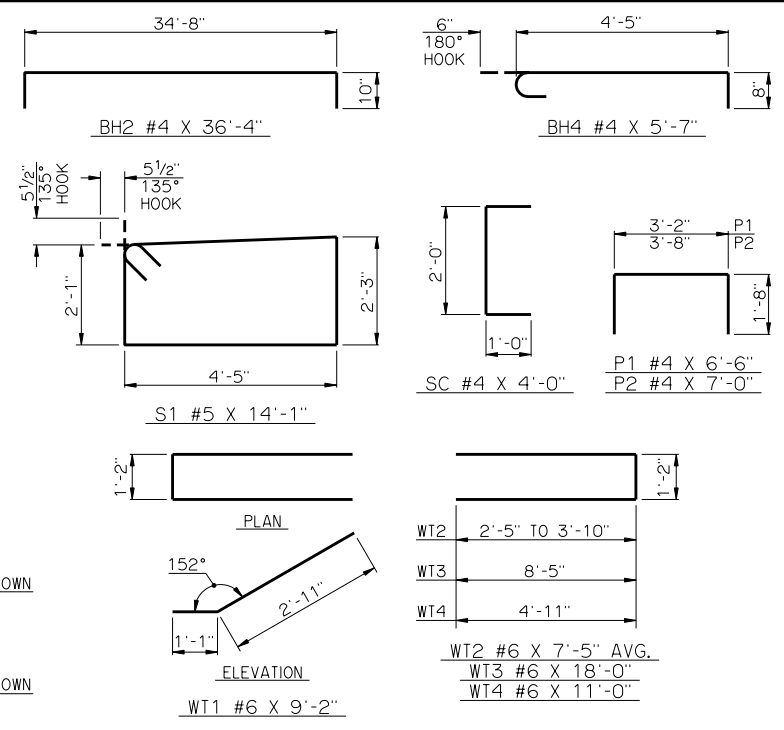


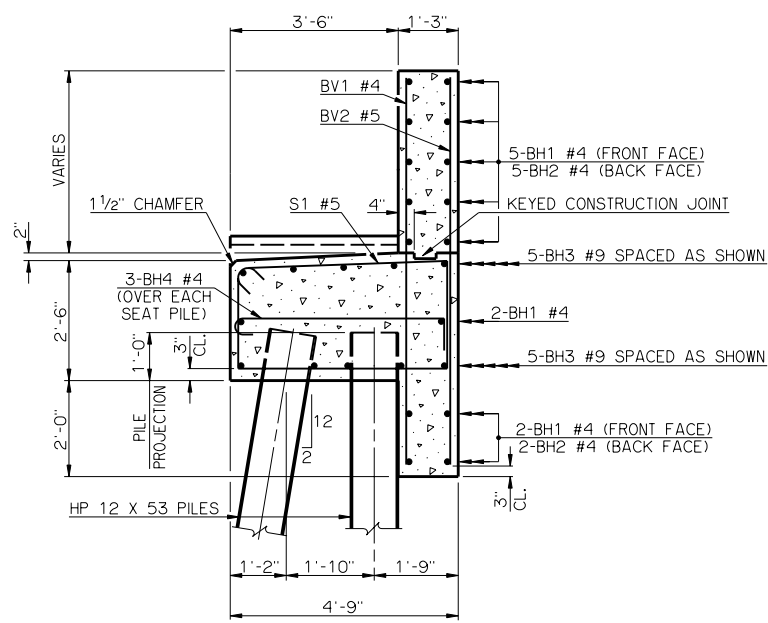
PILE SCHEDULE	
SPAN	MAXIMUM FACTORED PILE LOAD
55'	72.6 TON
60'	76.3 TON
65'	79.0 TON
70'	81.8 TON
75'	84.7 TON

PLAN

PEDESTAL DIMENSIONS		
SPAN	P1	P2
55'	9 1/16"	11 1/4"
60'	6 1/2"	8 11/16"
65'	4 1/2"	6 3/4"
70'	4 1/4"	6 7/16"
75'	2"	4 3/16"



DETAILS OF BENT REINFORCING STEEL



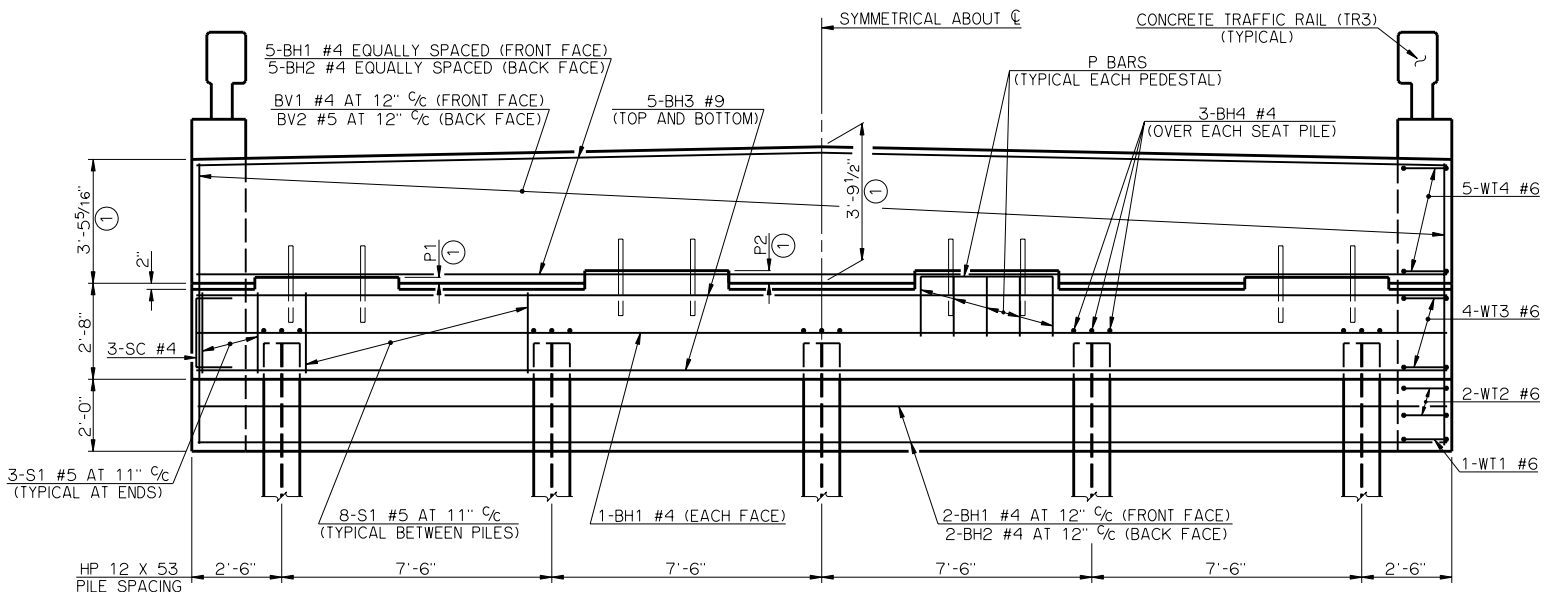
TYPICAL SECTION THRU ABUTMENT

BAR LIST - ONE ABUTMENT					
MARK	NO.	SIZE	FORM	LENGTH	LENGTH VARIATION
BH1	9	#4	STR.	34'-8"	-
BH2	7	#4	BNT.	36'-4"	-
BH3	10	#9	STR.	34'-8"	-
BH4	15	#4	BNT.	5'-7"	-
BV1	36	#4	STR.	7'-10" AVG.	7'-8" TO 8'-0"
BV2	36	#5	STR.	7'-10" AVG.	7'-8" TO 8'-0"
P1	20	#4	BNT.	6'-6"	-
P2	16	#4	BNT.	7'-0"	-
S1	38	#5	BNT.	14'-1"	-
SC	6	#4	BNT.	4'-0"	-
WT1	2	#6	BNT.	9'-2"	-
WT2	4	#6	BNT.	7'-5" AVG.	6'-0" TO 8'-10"
WT3	8	#6	BNT.	18'-0"	-
WT4	10	#6	BNT.	11'-0"	-

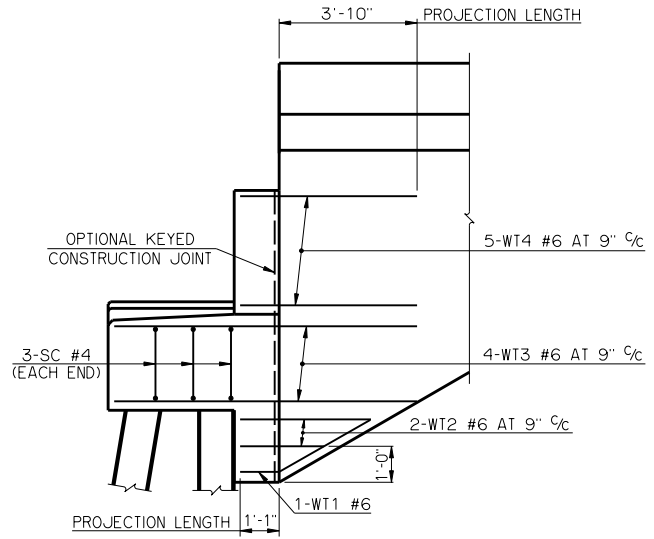
③ NO. INCLUDES TWO SETS OF 18 BARS
 ④ NO. INCLUDES TWO SETS OF 2 BARS

SUMMARY OF QUANTITIES - ONE ABUTMENT ⑤		
ITEM	UNIT	TOTAL
SUBSTRUCTURE EXCAVATION COMMON	CY	70.00
GRANULAR BACKFILL	CY	39.00
CLASS A CONCRETE	CY	27.10
REINFORCING STEEL	LB	3,290.00
PILES, FURNISHED (HP 12 x 53)	LF	-
PILES, DRIVEN (HP 12 x 53)	LF	-
6" PERFORATED PIPE UNDERDRAIN ROUND	LF	32.00
6" NON-PERF. PIPE UNDERDRAIN RND.	LF	-

⑤ EXCLUDES WINGS
 ① DIMENSIONS ARE FROM TOP OF BRIDGE SEAT AT FRONT FACE OF BACKWALL.
 ② ALL WT WING REINFORCING STEEL TIED TO THE ABUTMENT BRIDGE SEAT, BACKWALL AND CURTAIN WALL REINFORCING STEEL MUST BE IN PLACE PRIOR TO POURING ABUTMENT CONCRETE. FOR ADDITIONAL INFORMATION SEE WING DETAILS.



ELEVATION



SIDE VIEW

APPROVED BY BRIDGE ENGINEER *Robert J. Rusch* DATE 10/16/08
 OKLAHOMA DEPARTMENT OF TRANSPORTATION
 COUNTY BRIDGE STANDARD (ENGLISH)
ABUTMENT DETAILS
55' THRU 75' ROLLED BEAMS
32' CLEAR ROADWAY - CONVENTIONAL - SKEWED 0°
 1999 STANDARD SPECIFICATIONS CB32-C-SKO-ABUT-RB-5575 OOE
 CB-529E