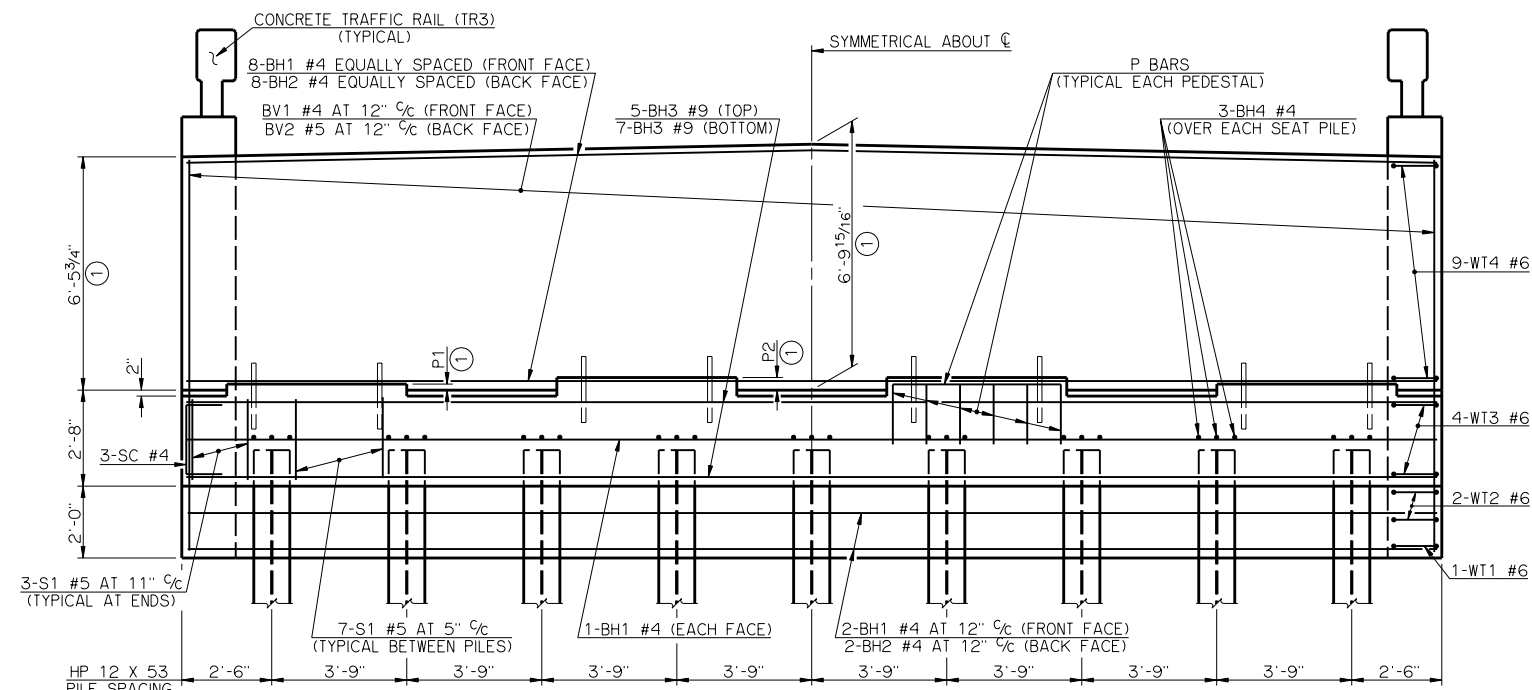


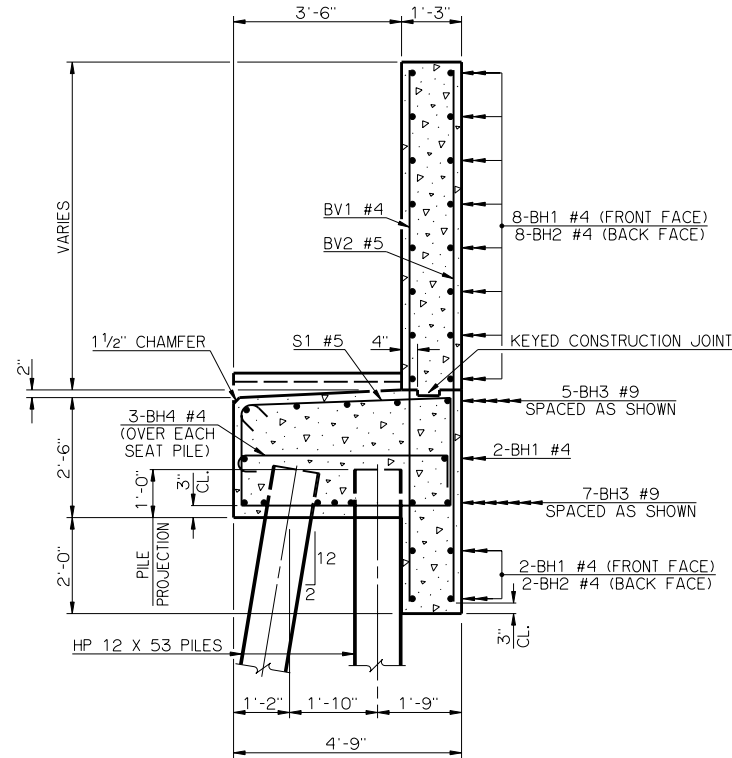
| PILE SCHEDULE | |
|---------------|----------------------------|
| SPAN | MAXIMUM FACTORED PILE LOAD |
| 120' | 75.5 TON |
| 125' | 77.4 TON |
| 130' | 79.3 TON |
| 135' | 81.2 TON |
| 140' | 83.0 TON |
| 145' | 84.9 TON |

PLAN

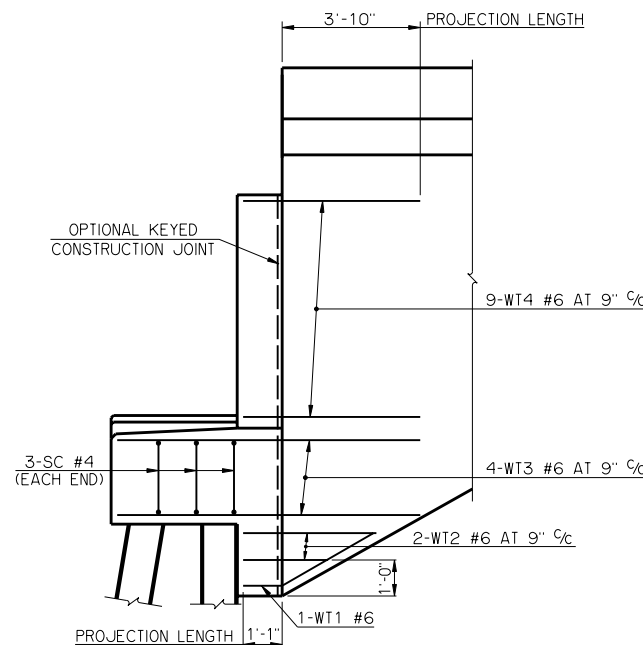
| PEDESTAL DIMENSIONS | | |
|---------------------|---------------------------------|-----------------------------------|
| BEAM TYPE | P1 | P2 |
| TYPE BT-72 | 2" | 4 ⁹ / ₁₆ " |
| TYPE J | 2 ¹ / ₂ " | 4 ¹¹ / ₁₆ " |



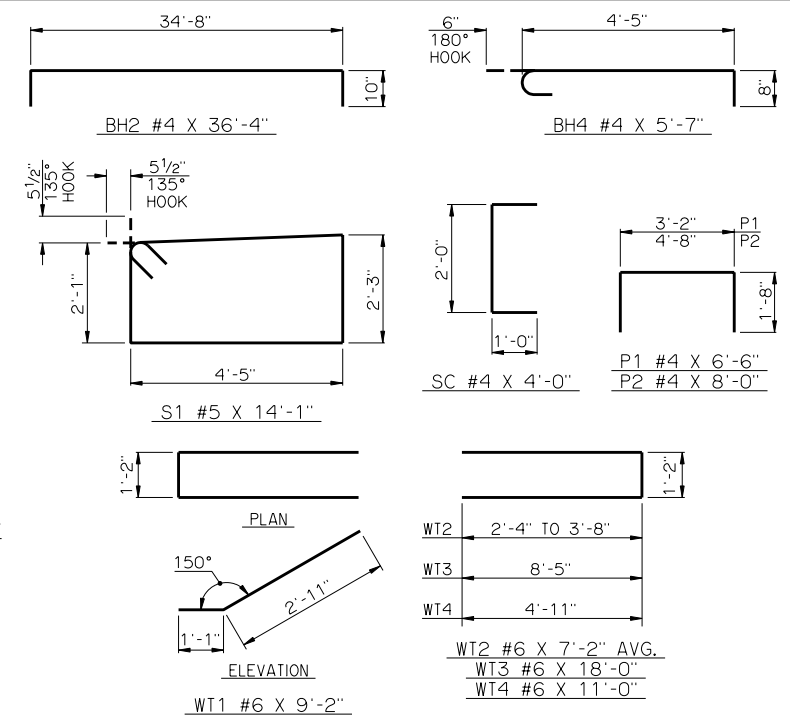
ELEVATION



TYPICAL SECTION THRU ABUTMENT



SIDE VIEW



DETAILS OF BENT REINFORCING STEEL

| BAR LIST - ONE ABUTMENT | | | | | |
|-------------------------|-----|------|------|--------------|------------------|
| MARK | NO. | SIZE | FORM | LENGTH | LENGTH VARIATION |
| BH1 | 12 | #4 | STR. | 34'-8" | - |
| BH2 | 10 | #4 | BNT. | 36'-4" | - |
| BH3 | 12 | #9 | STR. | 34'-8" | - |
| BH4 | 27 | #4 | BNT. | 5'-7" | - |
| BV1 | 36 | #4 | STR. | 10'-11" AVG. | 10'-9" TO 11'-1" |
| BV2 | 36 | #5 | STR. | 10'-11" AVG. | 10'-9" TO 11'-1" |
| P1 | 24 | #4 | BNT. | 6'-6" | - |
| P2 | 16 | #4 | BNT. | 8'-0" | - |
| S1 | 62 | #5 | BNT. | 14'-1" | - |
| SC | 6 | #4 | BNT. | 4'-0" | - |
| WT1 | 2 | #6 | BNT. | 9'-2" | - |
| WT2 | 4 | #6 | BNT. | 7'-2" AVG. | 5'-10" TO 8'-6" |
| WT3 | 8 | #6 | BNT. | 18'-0" | - |
| WT4 | 18 | #6 | BNT. | 11'-0" | - |

③ NO. INCLUDES TWO SETS OF 18 BARS
 ④ NO. INCLUDES TWO SETS OF 2 BARS

| SUMMARY OF QUANTITIES - ONE ABUTMENT ⑤ | | |
|--|------|----------|
| ITEM | UNIT | TOTAL |
| SUBSTRUCTURE EXCAVATION COMMON | CY | 80.00 |
| GRANULAR BACKFILL | CY | 74.00 |
| CLASS A CONCRETE | CY | 31.10 |
| REINFORCING STEEL | LB | 4,410.00 |
| PILES, FURNISHED (HP 12 x 53) | LF | - |
| PILES, DRIVEN (HP 12 x 53) | LF | - |
| 6" PERFORATED PIPE UNDERDRAIN ROUND | LF | 32.00 |
| 6" NON-PERF. PIPE UNDERDRAIN RND. | LF | - |

⑤ EXCLUDES WINGS

① DIMENSIONS ARE FROM TOP OF BRIDGE SEAT AT FRONT FACE OF BACKWALL.

② ALL WT WING REINFORCING STEEL TIED TO THE ABUTMENT BRIDGE SEAT, BACKWALL AND CURTAIN WALL REINFORCING STEEL MUST BE IN PLACE PRIOR TO POURING ABUTMENT CONCRETE. FOR ADDITIONAL INFORMATION SEE WING DETAILS.

APPROVED BY BRIDGE ENGINEER *Debra A. Rusch* DATE 10/16/08
 OKLAHOMA DEPARTMENT OF TRANSPORTATION
 COUNTY BRIDGE STANDARD (ENGLISH)
ABUTMENT DETAILS
TYPE BT-72 AND TYPE J P.C. BEAMS
32' CLEAR ROADWAY - CONVENTIONAL - SKEWED 0°
 1999 STANDARD SPECIFICATIONS CB32-C-SKO-ABUT-PC5 OOE CB-527E