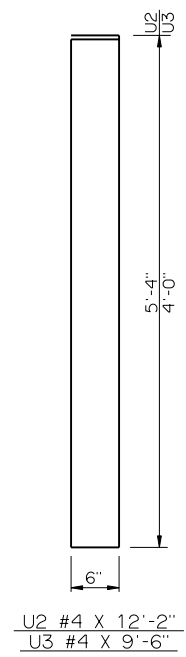
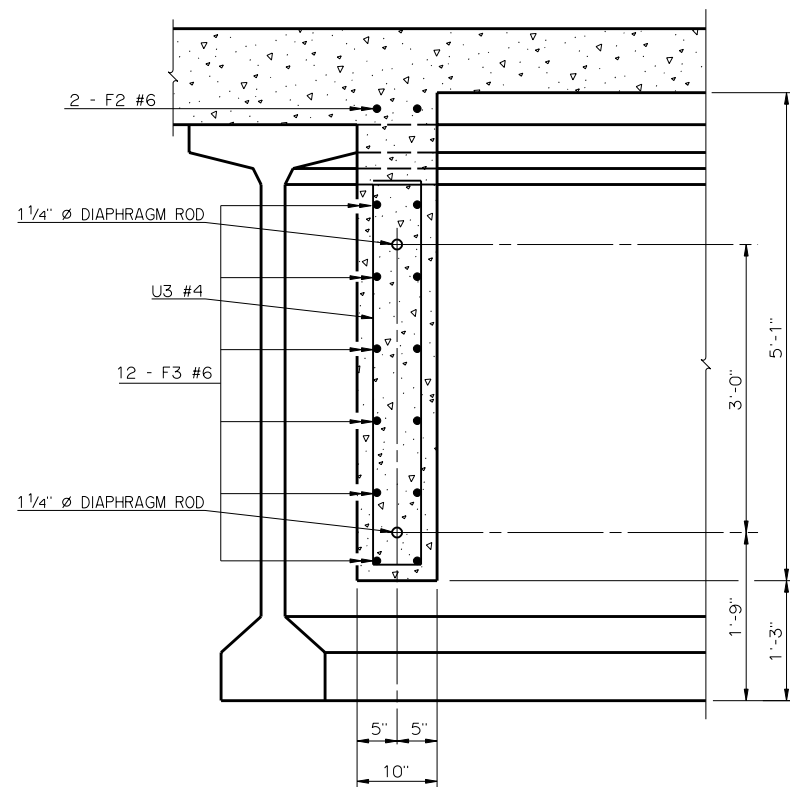


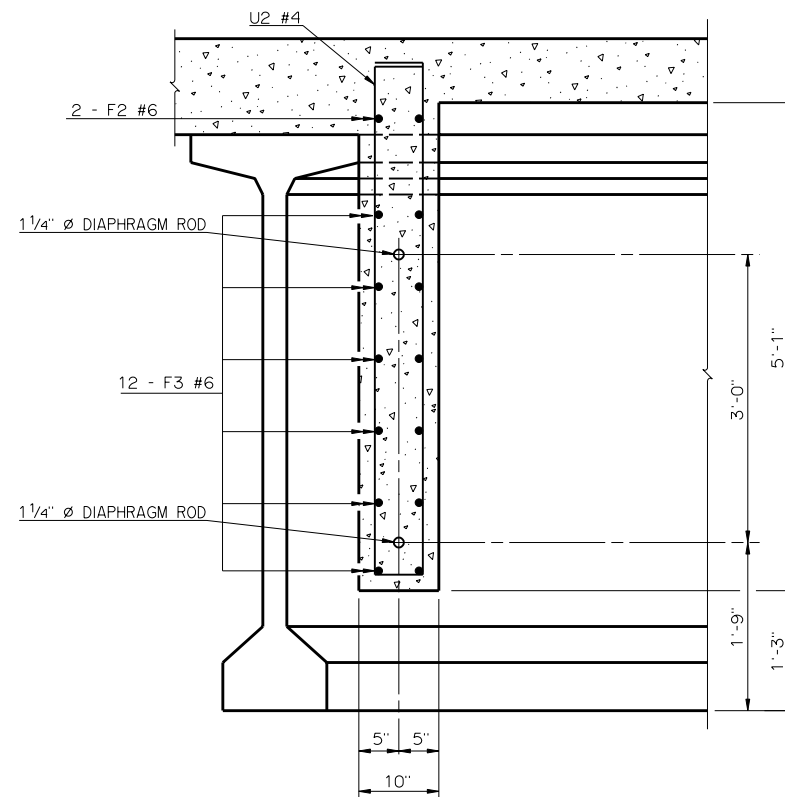
**PLAN OF END DIAPHRAGM**  
LEFT FORWARD SKEW SHOWN, RIGHT FORWARD SKEW OPPOSITE HAND



**DETAILS OF BENT REINFORCING STEEL**



**SECTION A-A**



**SECTION B-B**

BAR LIST - ONE END DIAPHRAGM				
MARK	NO.	SIZE	FORM	LENGTH
U2	8	#4	BNT.	12' - 2"
U3	4	#4	BNT.	9' - 6"
F2	2	#6	STR.	7' - 6"
F3	12	#6	STR.	10' - 11"

APPROVED BY BRIDGE ENGINEER *Robert J. Rusch* DATE 10/16/05  
 OKLAHOMA DEPARTMENT OF TRANSPORTATION  
 COUNTY BRIDGE STANDARD (ENGLISH)  
**END DIAPHRAGM DETAILS**  
 TYPE BT-72 AND TYPE J P.C. BEAMS  
 26' CLEAR ROADWAY - CONVENTIONAL - SKEWED 30°  
 1999 STANDARD SPECIFICATIONS      CB26-C-SK30-DIA-END-PC5      OOE  
 CB-241E