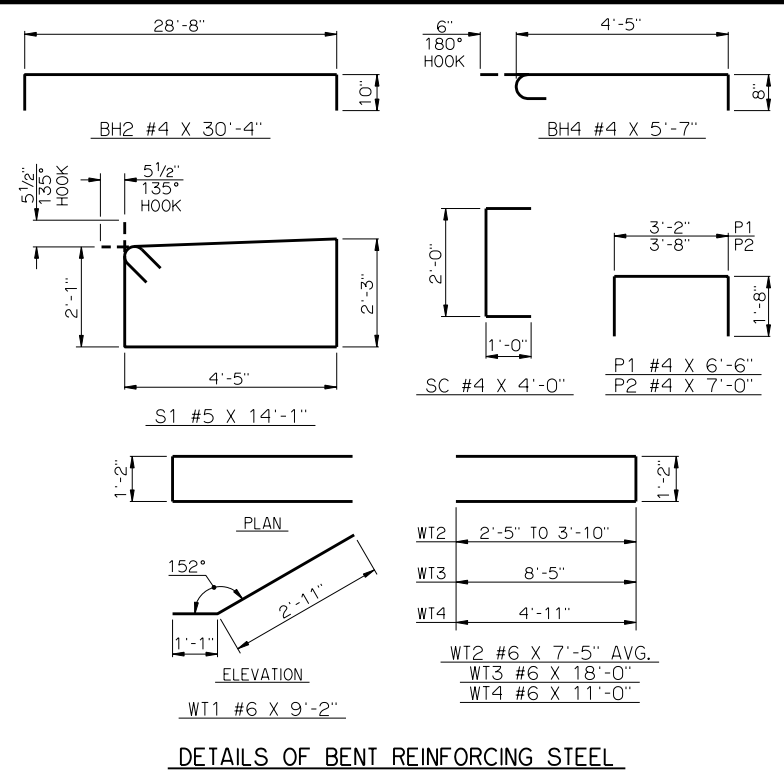
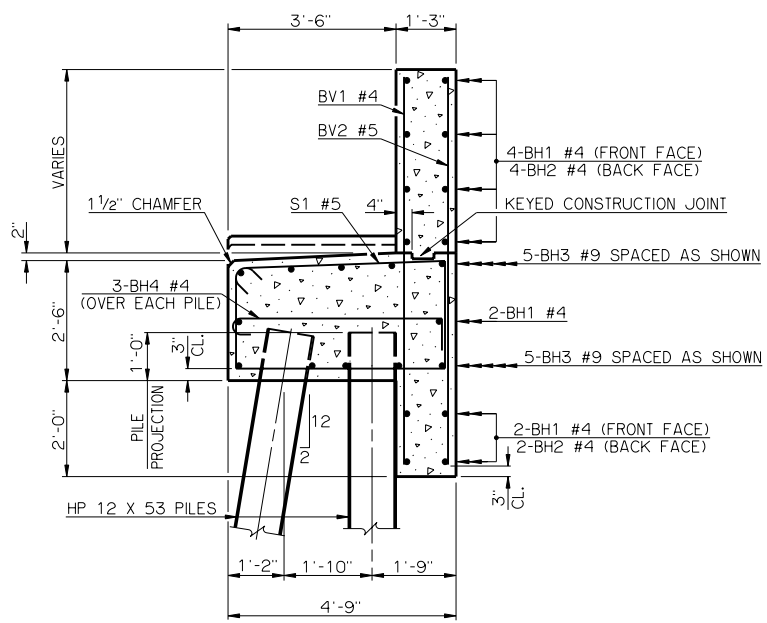
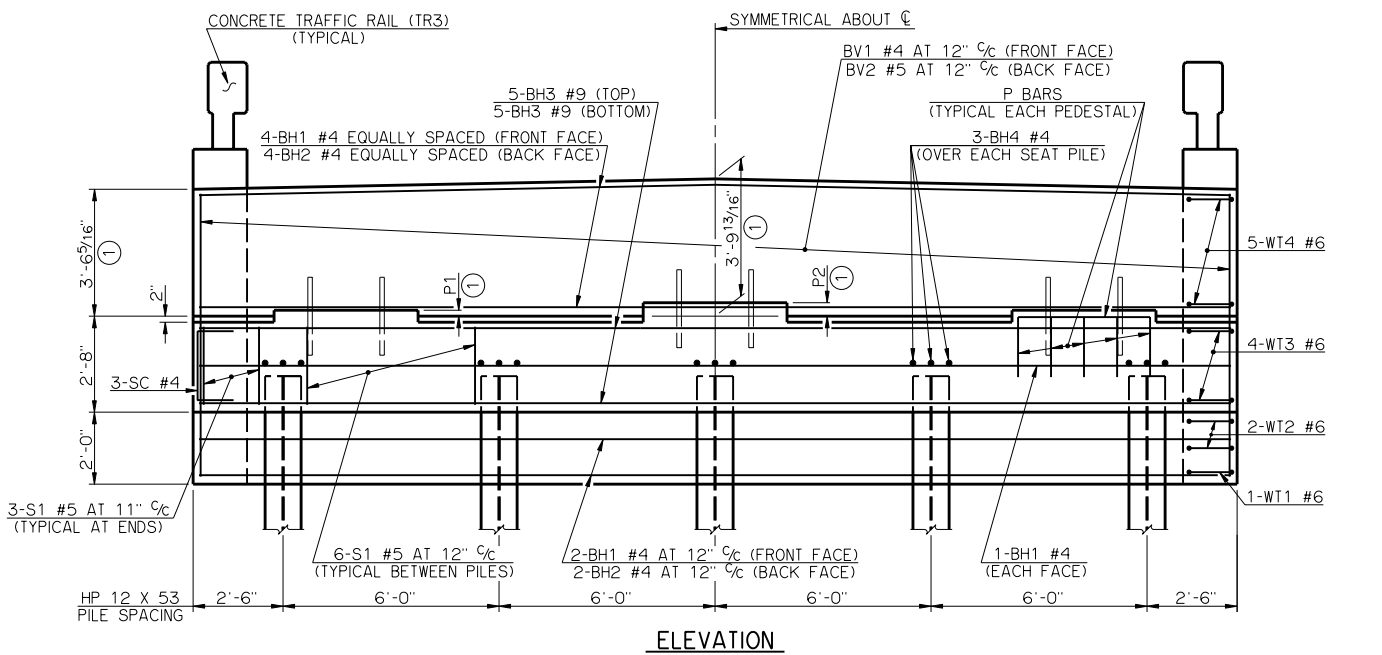


PEDESTAL DIMENSIONS

SPAN	P1	P2	SPAN	P1	P2
55'	7 <sup>3</sup> / <sub>16</sub> "	10 <sup>1</sup> / <sub>4</sub> "	80'	3"	5 <sup>7</sup> / <sub>16</sub> "
60'	5 <sup>9</sup> / <sub>8</sub> "	8 <sup>1</sup> / <sub>8</sub> "	85'	2 <sup>11</sup> / <sub>16</sub> "	5 <sup>3</sup> / <sub>16</sub> "
65'	5 <sup>9</sup> / <sub>16</sub> "	7 <sup>3</sup> / <sub>4</sub> "	90'	2 <sup>9</sup> / <sub>16</sub> "	4 <sup>3</sup> / <sub>4</sub> "
70'	5 <sup>3</sup> / <sub>16</sub> "	7 <sup>11</sup> / <sub>16</sub> "	95'	2"	4 <sup>7</sup> / <sub>16</sub> "
75'	2 <sup>11</sup> / <sub>16</sub> "	5 <sup>3</sup> / <sub>16</sub> "	100'	2"	4 <sup>7</sup> / <sub>16</sub> "

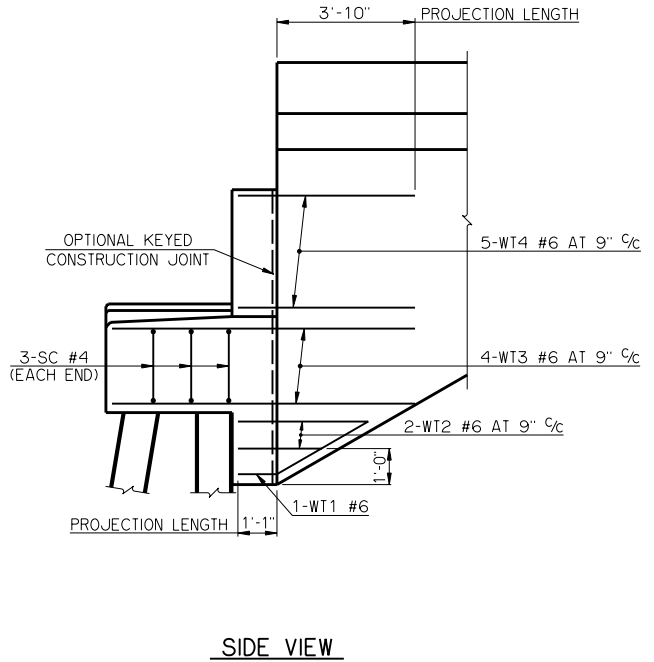


BAR LIST - ONE ABUTMENT

MARK	NO.	SIZE	FORM	LENGTH	LENGTH VARIATION
BH1	8	#4	STR.	28'-8"	-
BH2	6	#4	BNT.	30'-4"	-
BH3	10	#9	STR.	28'-8"	-
BH4	15	#4	BNT.	5'-7"	-
BV1	30	#4	STR.	7'-11" AVG.	7'-9" TO 8'-1"
BV2	30	#5	STR.	7'-11" AVG.	7'-9" TO 8'-1"
P1	15	#4	BNT.	6'-6"	-
P2	12	#4	BNT.	7'-0"	-
S1	30	#5	BNT.	14'-1"	-
SC	6	#4	BNT.	4'-0"	-
WT1	2	#6	BNT.	9'-2"	-
WT2	4	#6	BNT.	7'-5" AVG.	6'-0" TO 8'-10"
WT3	8	#6	BNT.	18'-0"	-
WT4	10	#6	BNT.	11'-0"	-

SUMMARY OF QUANTITIES - ONE ABUTMENT (5)

ITEM	UNIT	TOTAL
SUBSTRUCTURE EXCAVATION COMMON	CY	60.00
GRANULAR BACKFILL	CY	32.00
CLASS A CONCRETE	CY	22.20
REINFORCING STEEL	LB	2,750.00
PILES, FURNISHED (HP 12 x 53)	LF	-
PILES, DRIVEN (HP 12 x 53)	LF	-
6" PERFORATED PIPE UNDERDRAIN ROUND	LF	26.00
6" NON-PERF. PIPE UNDERDRAIN RND.	LF	-



APPROVED BY BRIDGE ENGINEER *Robert J. Rusch* DATE 10/16/08

OKLAHOMA DEPARTMENT OF TRANSPORTATION  
COUNTY BRIDGE STANDARD (ENGLISH)

**ABUTMENT DETAILS**  
**55' THRU 100' ROLLED BEAMS**

**26' CLEAR ROADWAY - CONVENTIONAL - SKEWED 0°**

1999 STANDARD SPECIFICATIONS      CB26-C-SKO-ABUT-RB-55100      OOE      CB-155E